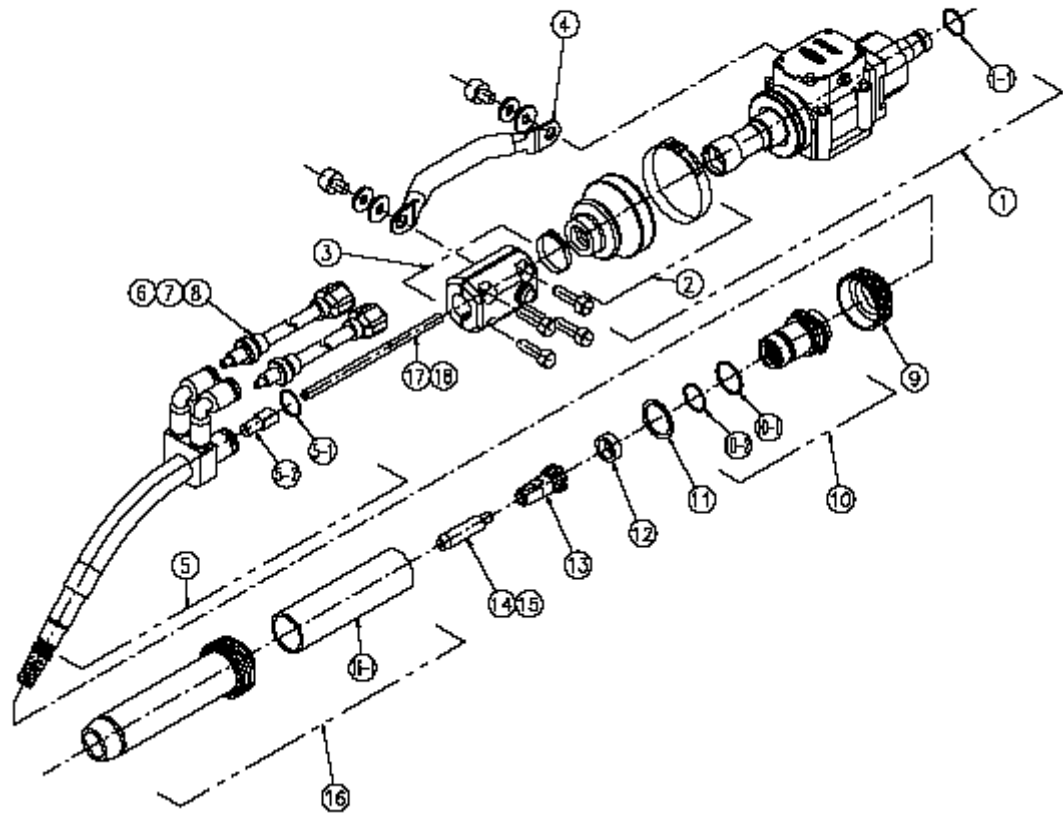


Standard partlist for MTXCAW-5031

Pos	article-No.	description	number	category	remark
	MTXCAW-5031	Al welding torch(only V-type)	1	RM27	1.2 tip is installed
1	L6380B00	Shock sensor unit	1	RP34	
1-1	3570-017	"O"-ring	1	RP34	
2	L6380G00	Hood assy	1	RP34	
3	L6380C00	Nozzle holder assy	1	RP34	
4	L6380D00	Power supply welding assy	1	RP34	
5	L7063B00	Torch body assy	1	RP34	
5-1	3574-007	"O"-ring	1	RP34	
5-2	L7062B04	Spacer	1	RP34	
6	L6571D00	Coolant hose (1)	1	RP34	6mtr
7	L6571E00	Coolant hose (2)	(1)	RP34	8mtr
8	L6571F00	Coolant hose (3)	(1)	RP34	10mtr
9	U4430P04	Cap nut	1	RP34	
10	U4430N00	Insulator	1	RP32	
10-1	3574-003	"O"-ring	1	RP34	
10-2	3574-006	"O"-ring	1	RP34	
11	3361-716	Wave washer	1	RP34	BWW-625
12	U4430P01	Nut	1	RP34	
13	U4430P02	Tip nut	1	RP34	
14	K980B88	Tip 1.6	1	RP32	Packing Unit 10 pcs.
15	K980B86	Tip 1.2	(1)	RP32	Packing Unit 10 pcs.
16	U4430H00	Nozzle assy	1	RP34	
16-1	U4430H06	Insulation Sleeve	(1)	RP34	
17	L7063C00	Inner liner 1.2	(1)	RP34	Option
18	L7063D00	Inner liner 1.6	1	RP34	



MTXCAW-5031